



mp  
Metropoint

strategically **onpoint**





With unparalleled accessibility and visibility at one of the most iconic addresses in the Twin Cities, 600 Metropoint is strategically onpoint for companies who are seeking to stand out in today's market.

## highlights

- Convenient location between West End and Ridgedale Center
- Immediate access to I-394 and Highway 169
- Modern on-site amenities
- Unparalleled views of Minneapolis
- Efficient, side core floorplate with 3 stairwells
- Unrivaled best-in-class value

strategically **onpoint**

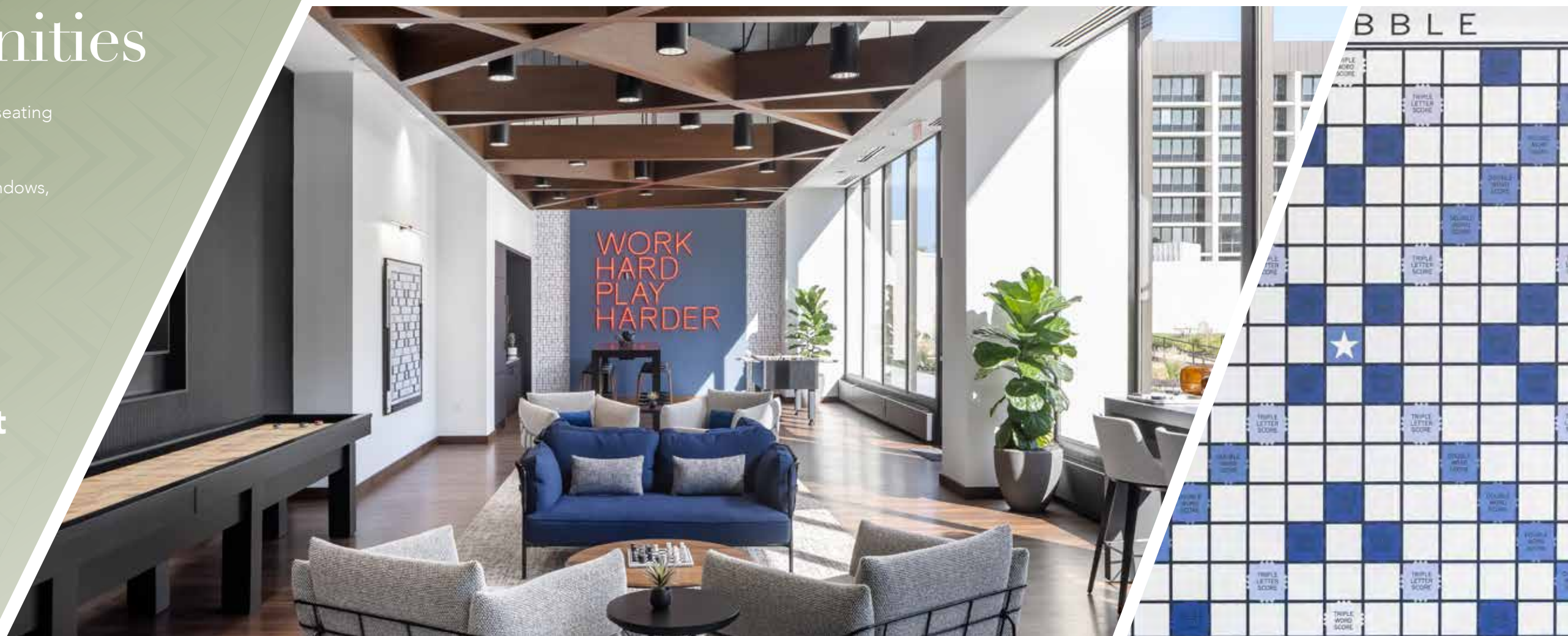


600 Metropoint offers  
exceptional Class A amenities  
designed to enhance the  
modern tenant experience.

# modern amenities

- Cafe with ample indoor and outdoor seating
- Gourmet coffee bar
- Fitness center featuring full-length windows, showers and locker rooms
- State-of-the-art conference facilities
- Modern tenant lounge for collaboration workspace
- Ample on-site parking

strategically **onpoint**





unparalleled access

600 Metropoint maintains direct access to Hwy 169, Hwy 55 and I-394. Coupled with ample on-site parking and a Metro-transit stop on-site, 600 Metropoint's accessibility is unrivaled.

In addition, the Hwy 169 and I-394 interchange is the last exit before major traffic congestion into Minneapolis begins, offering an exceptional suburban location for top employee recruiting and retention, without the headache of stop-and-go traffic.

strategically **onpoint**

Minneapolis CBD

MINNESOTA  
55

West  
End

INTERSTATE  
394

122,908 VPD

101,652 VPD

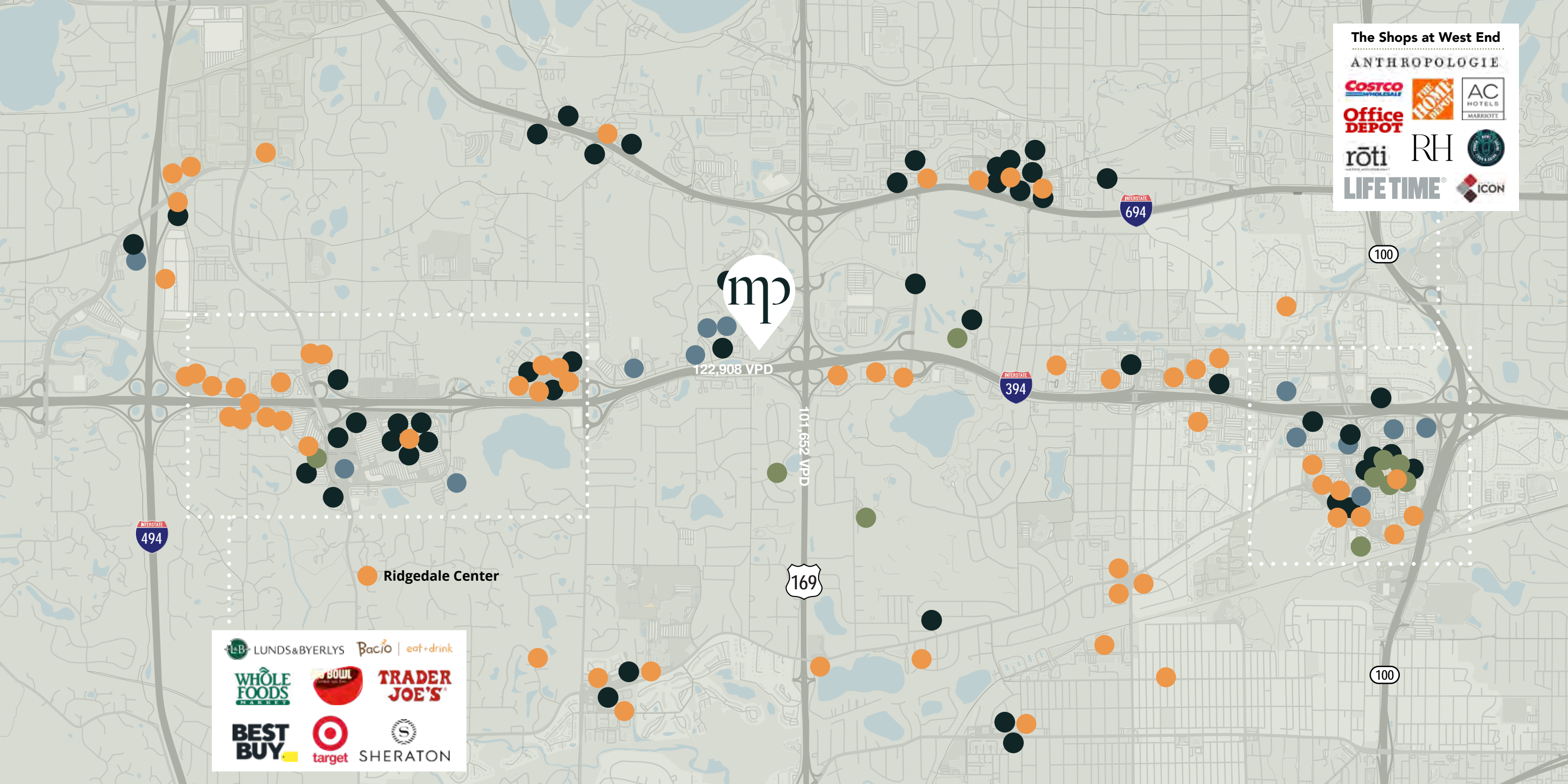


exposure to over  
**124,000**  
vehicles daily

169

mp





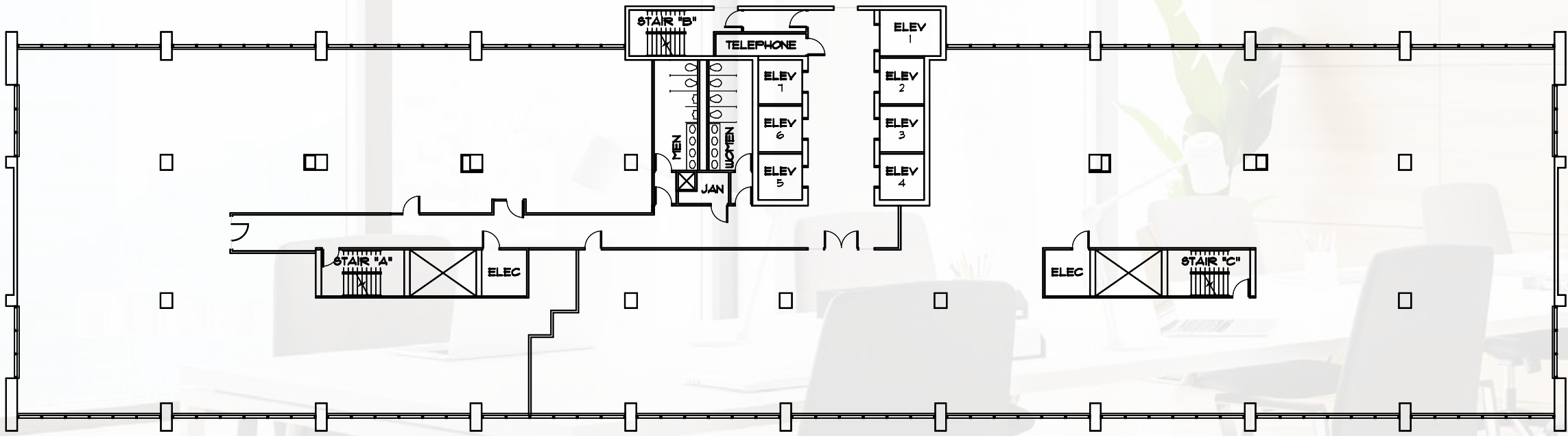
strategically located

Positioned along the prestigious I-394 Corridor, 600 Metropoint is in close proximity to West End, Ridgedale Center, and the Minneapolis CBD, providing easy access to restaurants, hotels, retail and recreation amenities.

- Stay
- Play
- Shop
- Eat



600 Metropoint's side core offers tenants an efficient, flexible floorplate with excellent views and abundant natural light.



floorplate  
strategically **onpoint**



**EQUUS**  
CAPITAL PARTNERS, LTD.

Metropoint



**JON DAHL**  
+1 612 217 5130  
[jon.dahl@am.jll.com](mailto:jon.dahl@am.jll.com)

**BRENT ROBERTSON**  
+1 612 217 5132  
[brent.robertson@am.jll.com](mailto:brent.robertson@am.jll.com)

**JESSICA MAIDL**  
+1 612 217 6742  
[jessica.maidl@am.jll.com](mailto:jessica.maidl@am.jll.com)