

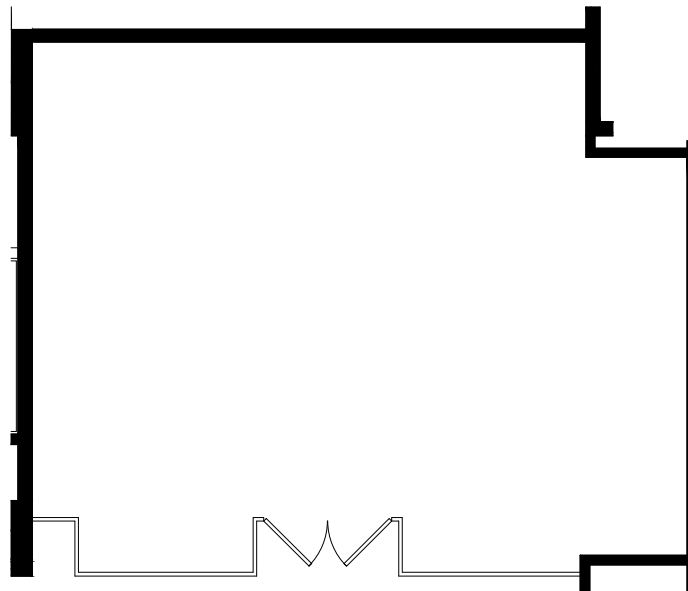
mp **Metropoint**
The Center for Business

Suite 100

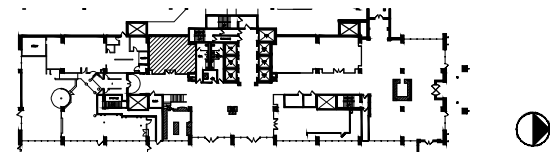
801 RSF

600 S. Hwy 169

St. Louis Park, MN



OWNED BY AN AFFILIATE OF
EQUUS
CAPITAL PARTNERS, LTD.



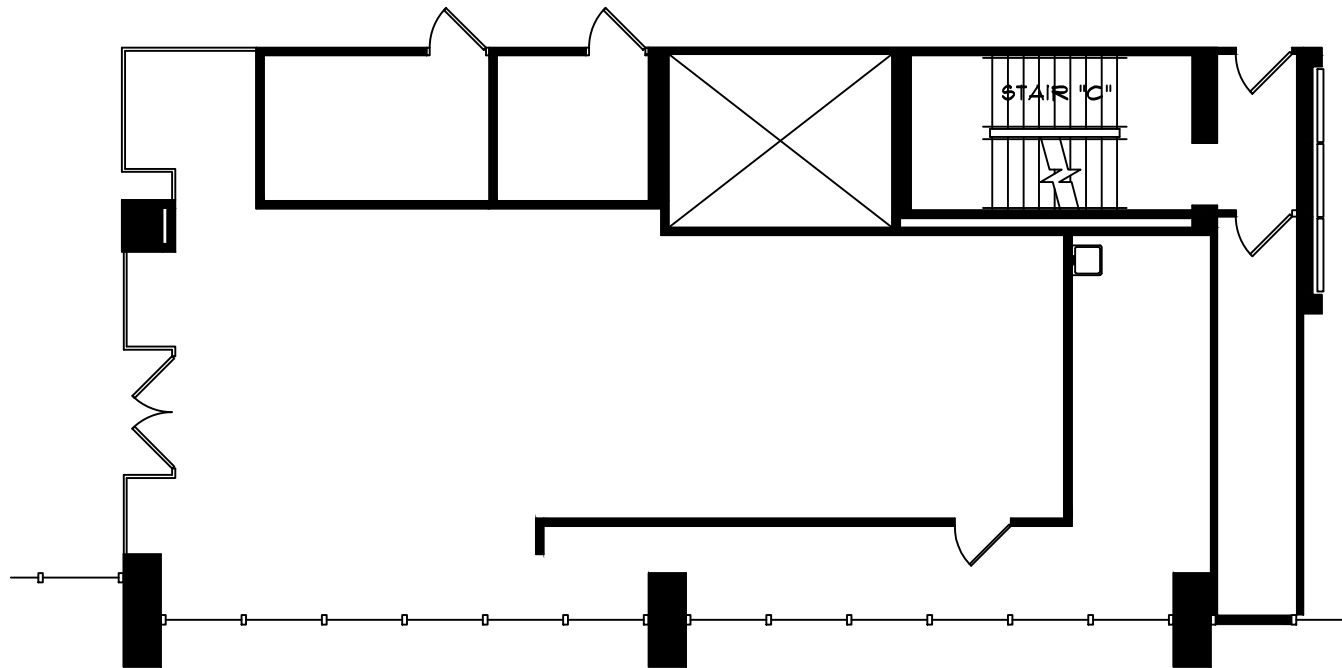
mp **Metropoint**
The Center for Business

Suite 165

1,335 RSF

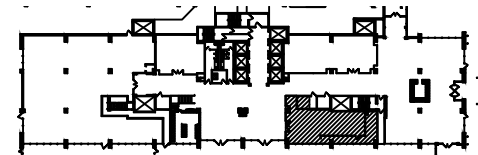
600 S. Hwy 169

St. Louis Park, MN



OWNED BY AN AFFILIATE OF
EQUUS
CAPITAL PARTNERS, LTD.

Colliers
INTERNATIONAL



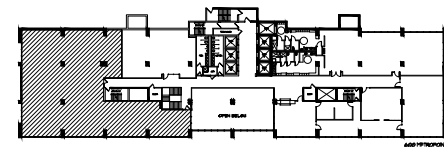
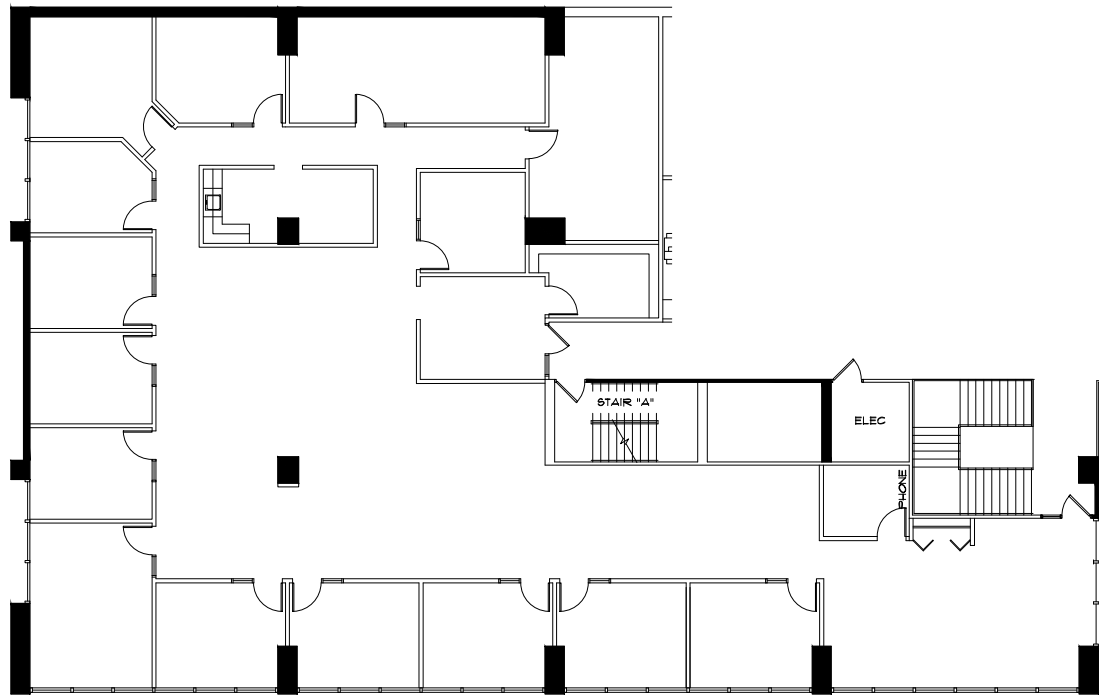
mp **Metropoint**
The Center for Business

Suite 250

5,812 RSF

600 S. Hwy 169

St. Louis Park, MN



OWNED BY AN AFFILIATE OF
EQUUS
CAPITAL PARTNERS, LTD.

Colliers
INTERNATIONAL



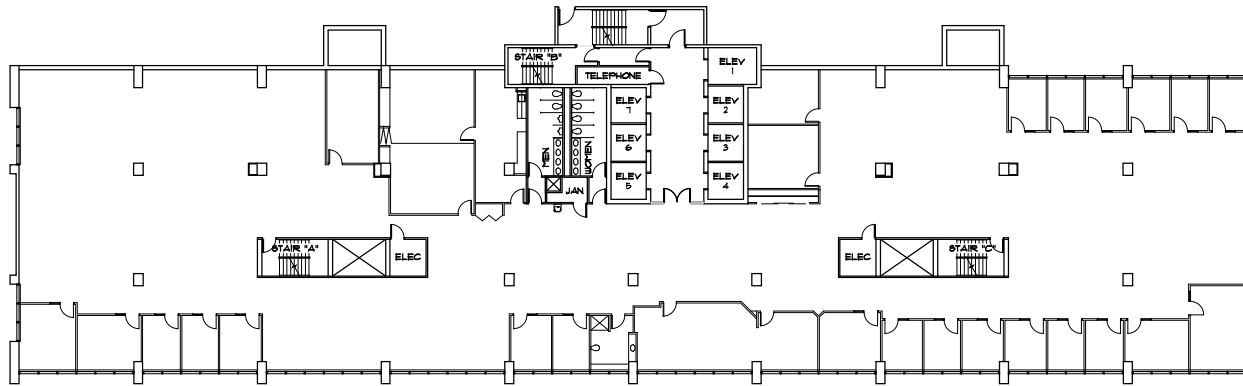
mp **Metropoint**
The Center for Business

Suite 300

18,000 RSF

600 S. Hwy 169

St. Louis Park, MN



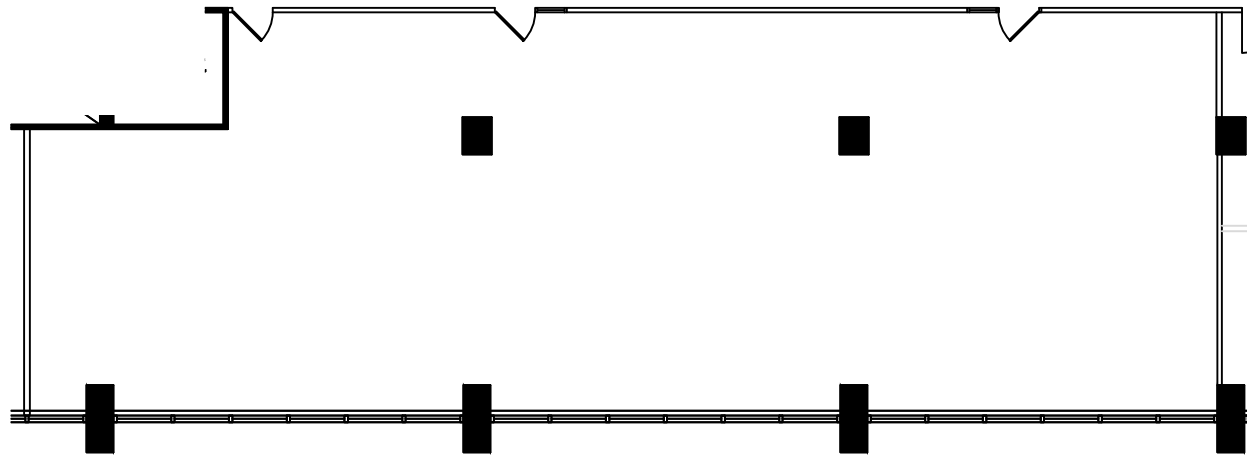
mp **Metropoint**
The Center for Business

Suite 630

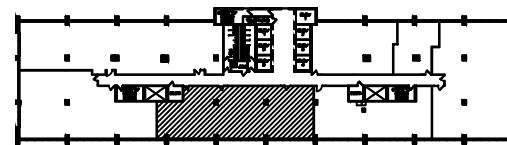
3,067 RSF

600 S. Hwy 169

St. Louis Park, MN



OWNED BY AN AFFILIATE OF
EQUUS
CAPITAL PARTNERS, LTD.



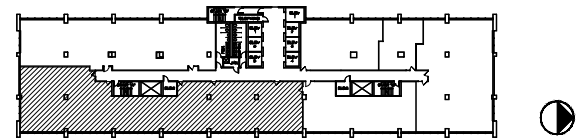
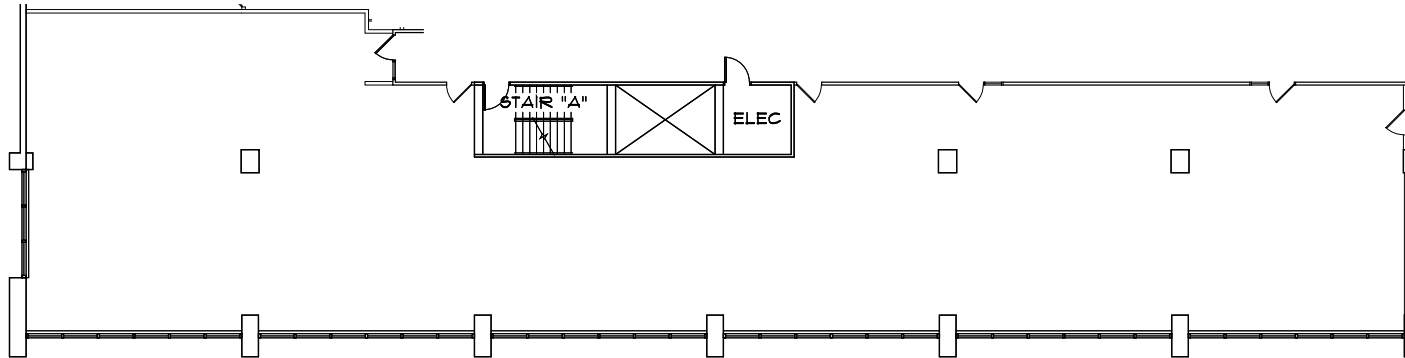
mp **Metropoint**
The Center for Business

Suite 650

6,100 RSF

600 S. Hwy 169

St. Louis Park, MN



OWNED BY AN AFFILIATE OF
EQUUS
CAPITAL PARTNERS, LTD.



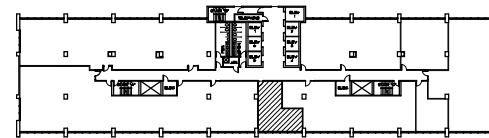
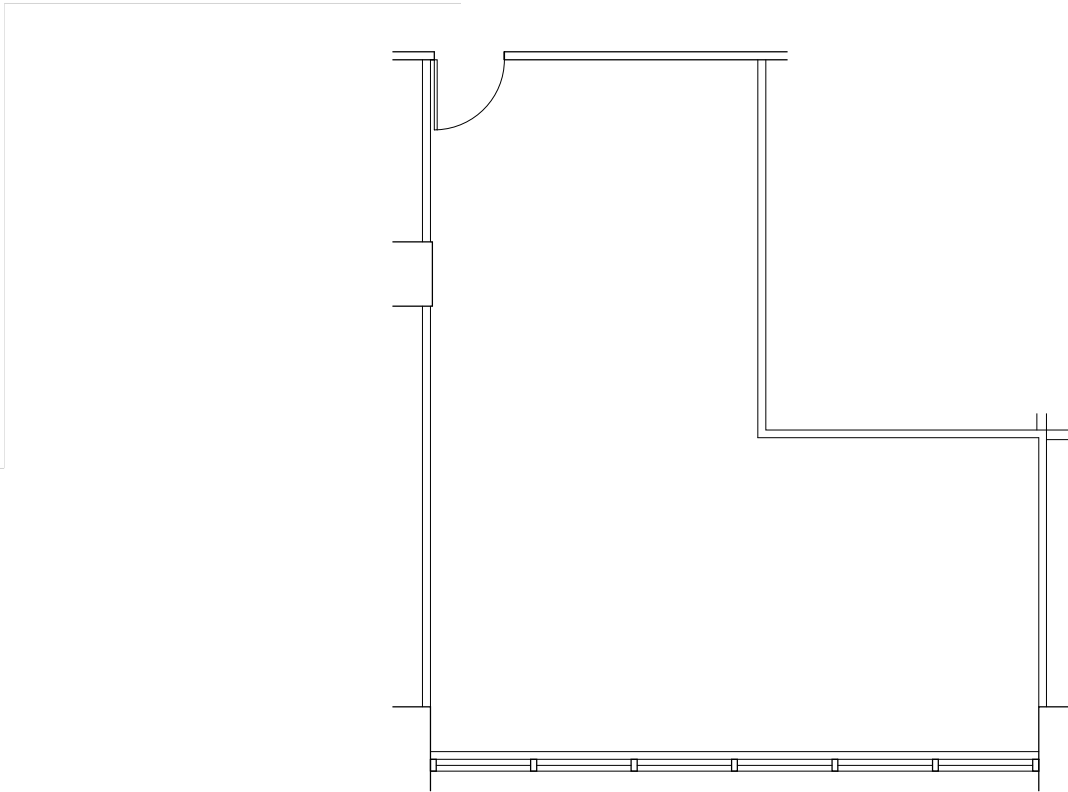
mp **Metropoint**
The Center for Business

Suite 654

727 RSF

600 S. Hwy 169

St. Louis Park, MN



OWNED BY AN AFFILIATE OF
EQUUS
CAPITAL PARTNERS, LTD.

Colliers
INTERNATIONAL

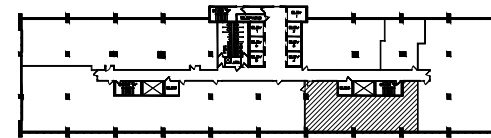
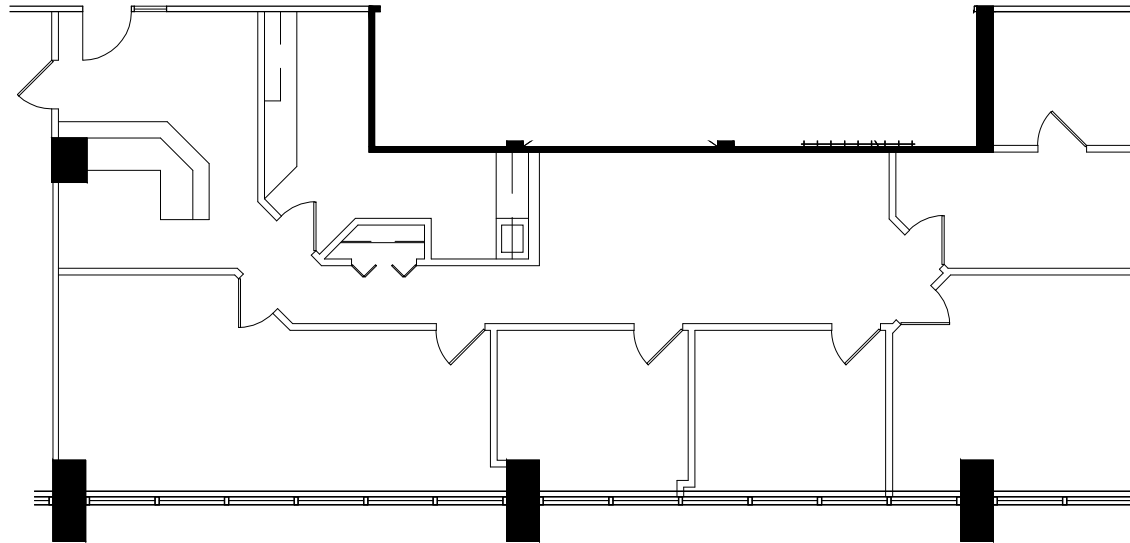
mp **Metropoint**
The Center for Business

Suite 655

2,023 RSF

600 S. Hwy 169

St. Louis Park, MN



OWNED BY AN AFFILIATE OF
EQUUS
CAPITAL PARTNERS, LTD.



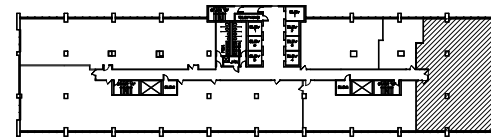
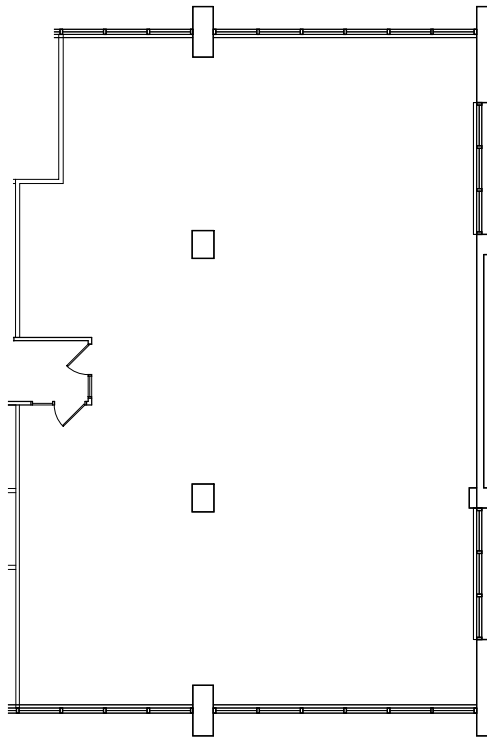
mp **Metropoint**
The Center for Business

Suite 675

□66□RSF

600 S. Hwy 169

St. Louis Park, MN



OWNED BY AN AFFILIATE OF
EQUUS
CAPITAL PARTNERS, L.T.O.

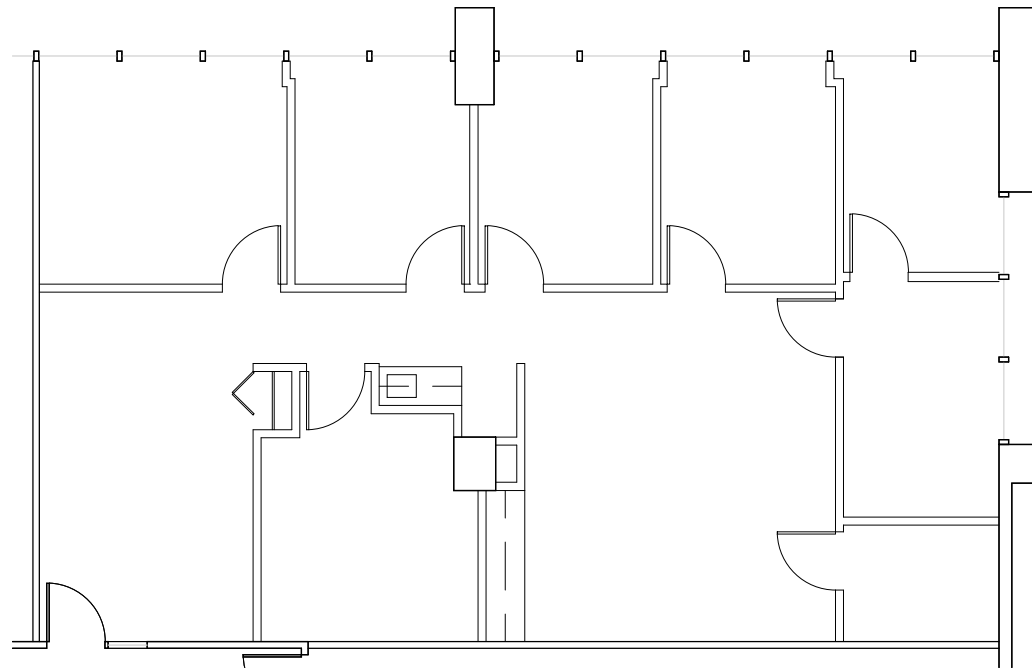


mp **Metropoint**
The Center for Business

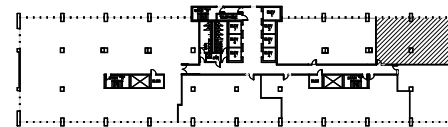
Suite 1680

1,844 RSF

600 S. Hwy 169
St. Louis Park, MN



OWNED BY AN AFFILIATE OF
EQUUS
CAPITAL PARTNERS, LTD.



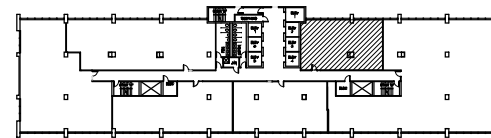
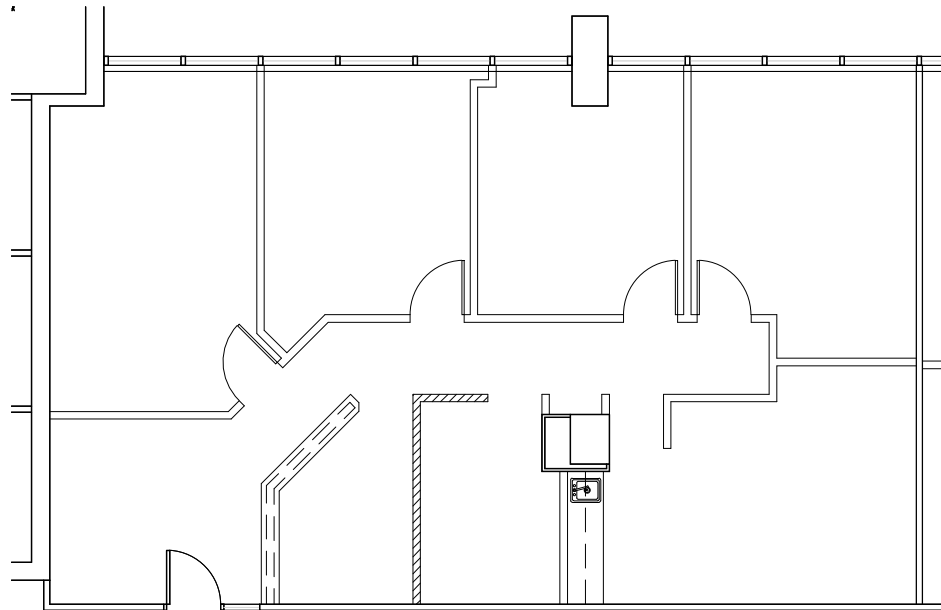
mp Metropoint
The Center for Business

Suite 700

1,747 RSF

600 S. Hwy 169

St. Louis Park, MN



OWNED BY AN AFFILIATE OF
EQUUS
CAPITAL PARTNERS, L.T.O.

Colliers
INTERNATIONAL

mp **Metropoint**
The Center for Business

Suite 710 & 730

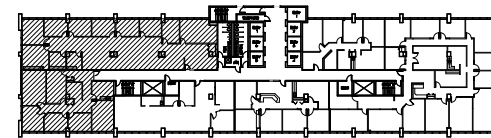
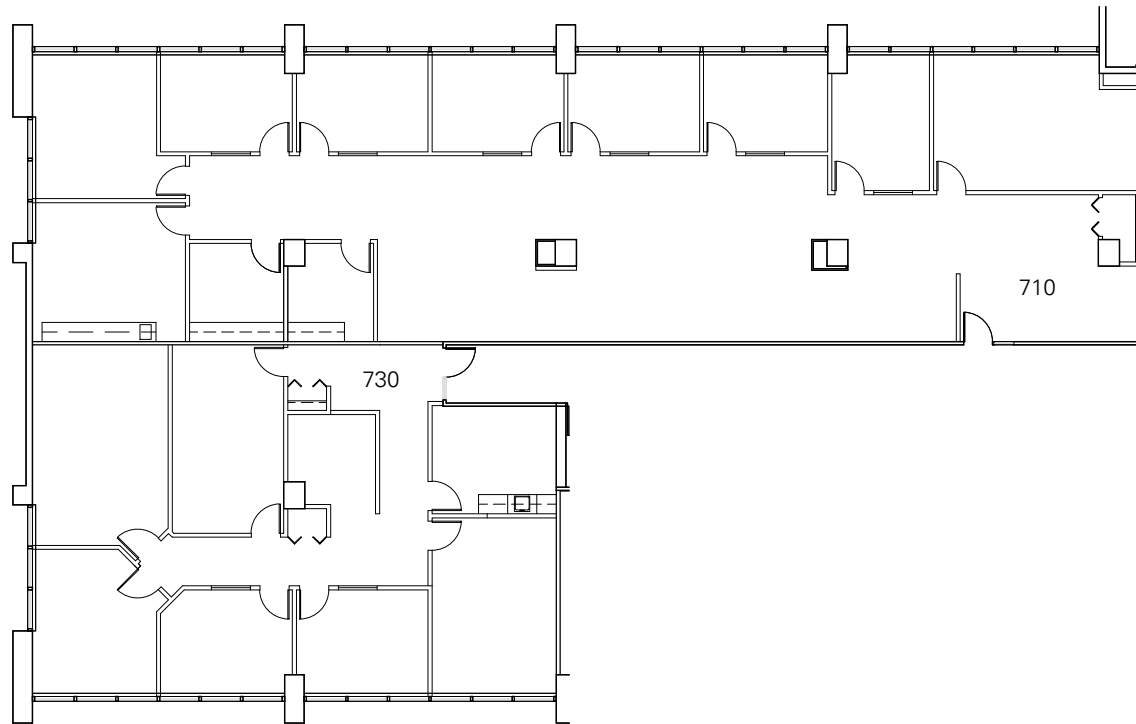
710 - 4,227 RSF

730 - 2,359 RSF

TOTAL - 6,586 RSF

600 S. Hwy 169

St. Louis Park, MN



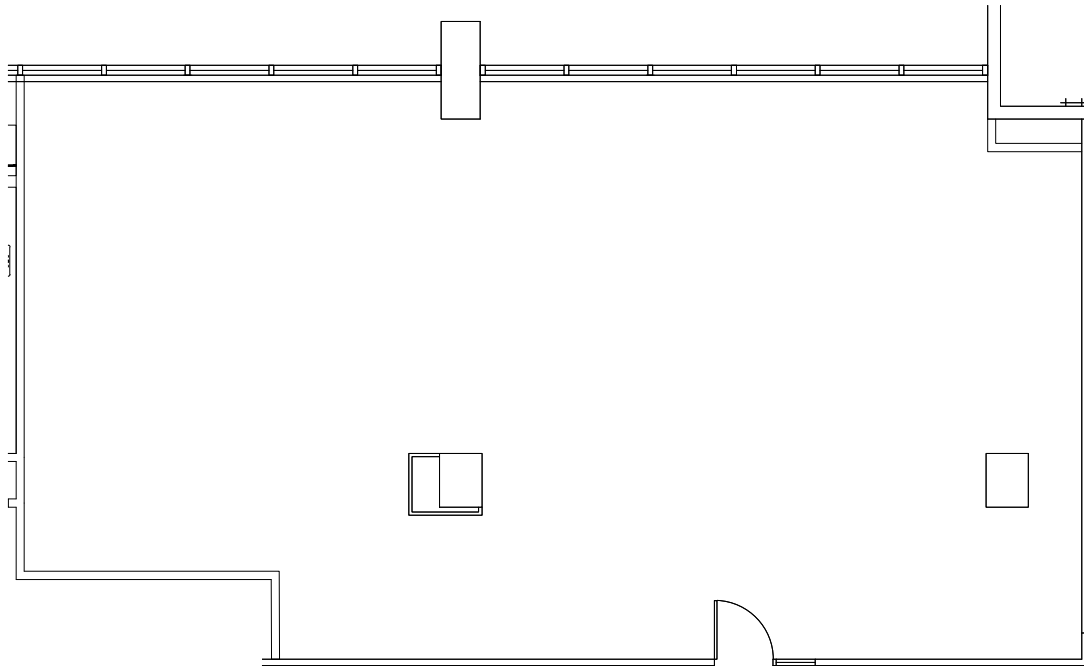
mp Metropoint
The Center for Business

Suite 710

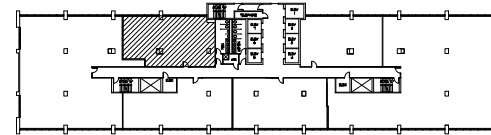
1,899 RSF

600 S. Hwy 169

St. Louis Park, MN



OWNED BY AN AFFILIATE OF
EQUUS
CAPITAL PARTNERS, L.T.O.



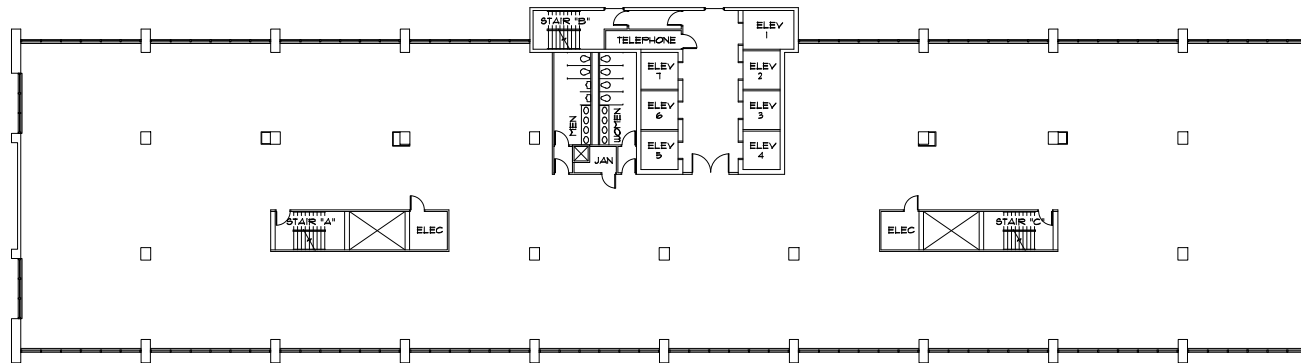
mp Metropoint
The Center for Business

Suite 1200

18,485 RSF

600 S. Hwy 169

St. Louis Park, MN



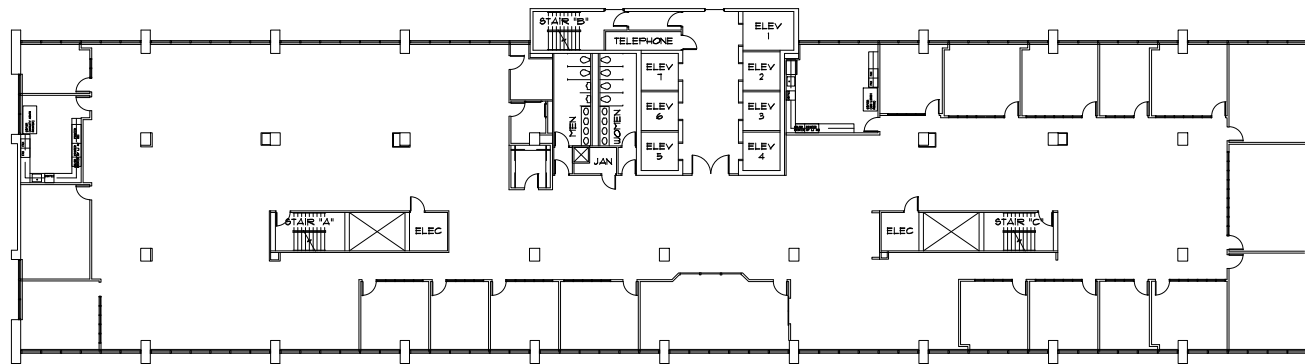
mp **Metropoint**
The Center for Business

Suite 1300

18,485 RSF

600 S. Hwy 169

St. Louis Park, MN



mp Metropoint

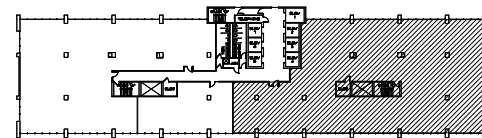
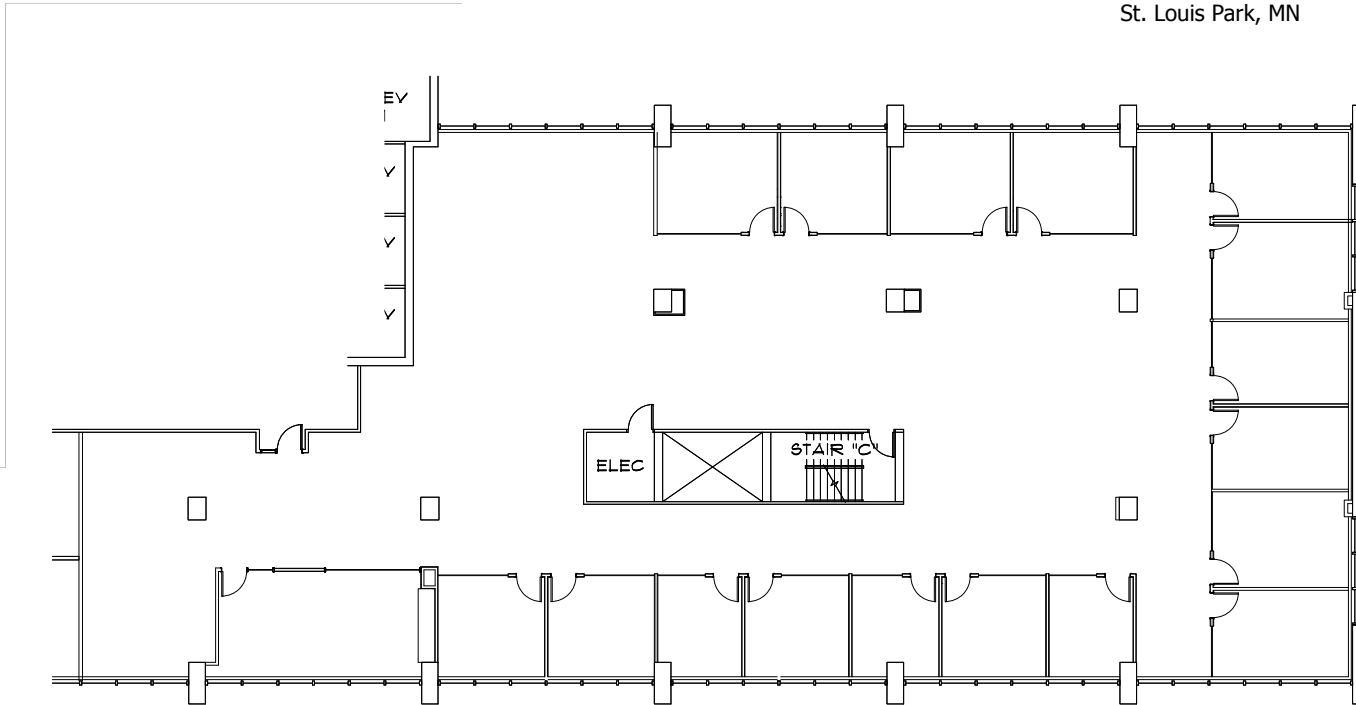
The Center for Business

Suite 1400

9,722 RSF

600 S. Hwy 169

St. Louis Park, MN



OWNED BY AN AFFILIATE OF
EQUUS
CAPITAL PARTNERS, LTD.

Colliers
INTERNATIONAL



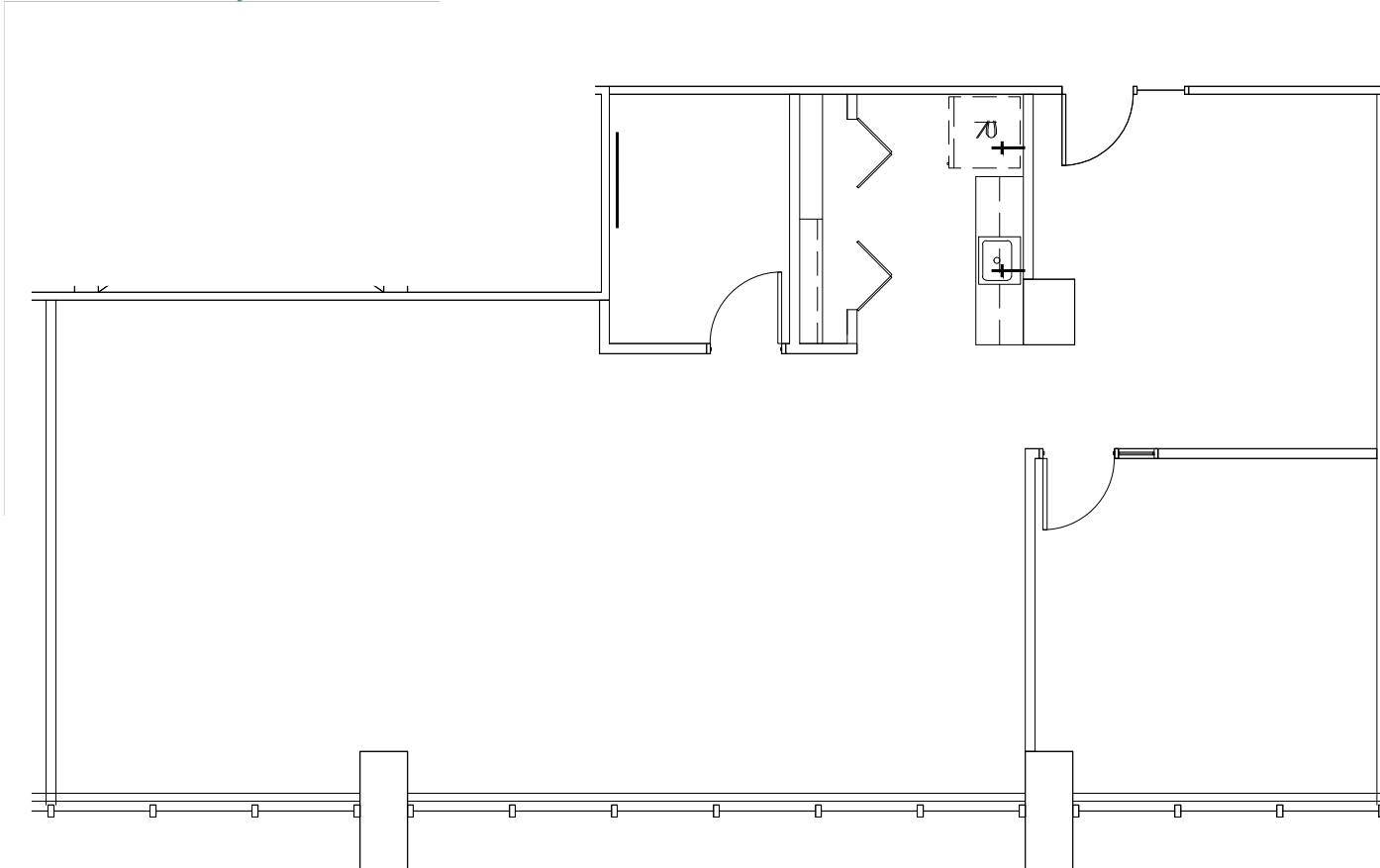
mp **Metropoint**
The Center for Business

Suite 1410

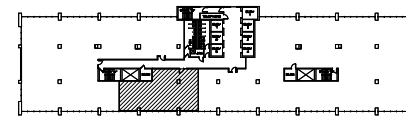
1,793 RSF

600 S. Hwy 169

St. Louis Park, MN



OWNED BY AN AFFILIATE OF
EQUUS
CAPITAL PARTNERS, LTD.



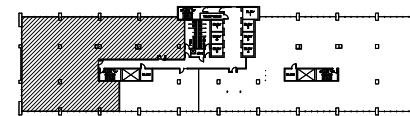
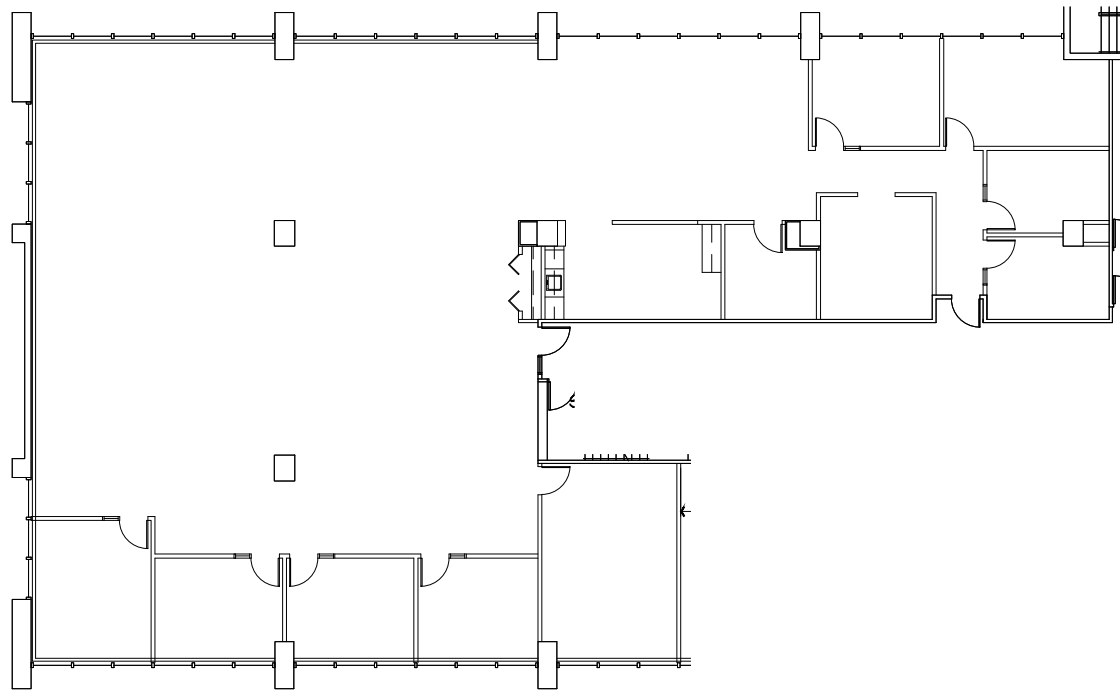
mp Metropoint
The Center for Business

Suite 1425

6,970 RSF

600 S. Hwy 169

St. Louis Park, MN



OWNED BY AN AFFILIATE OF
EQUUS
CAPITAL PARTNERS, LTD.

Colliers
INTERNATIONAL



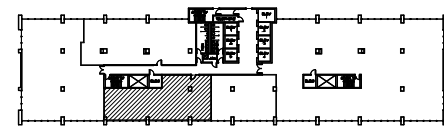
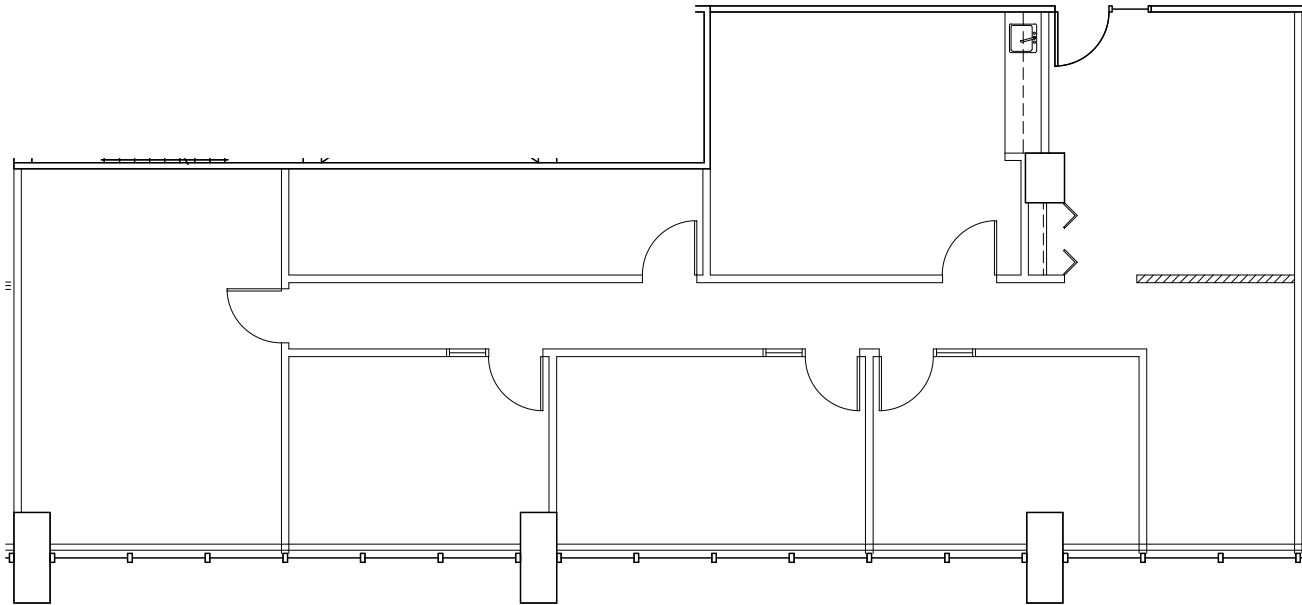
mp **Metropoint**
The Center for Business

Suite 1450

2,177 RSF

600 S. Hwy 169

St. Louis Park, MN



mp Metropoint

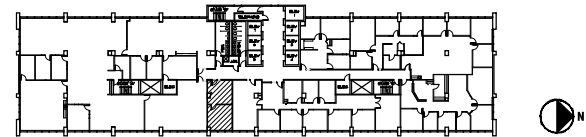
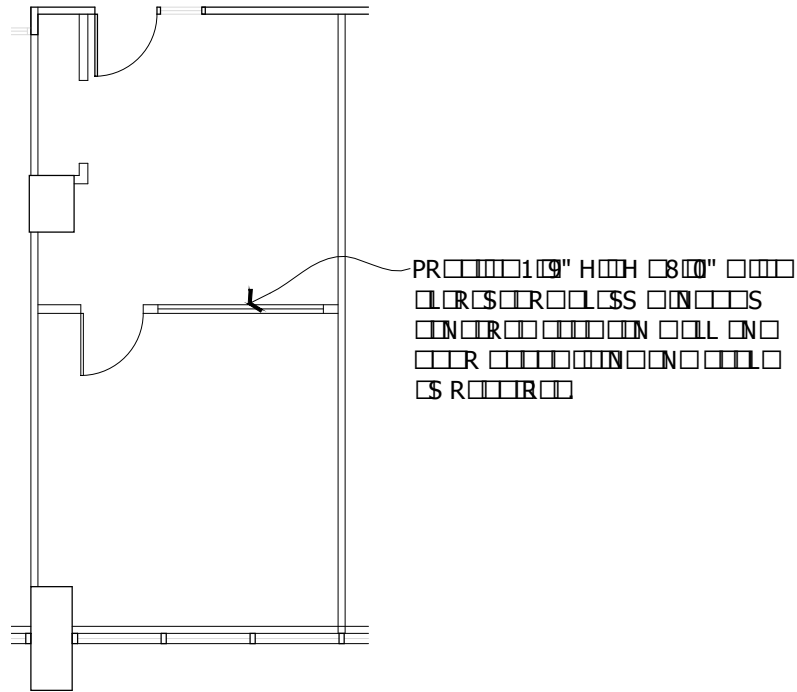
The Center for Business

Suite 1573

539 RSF

600 S. Hwy 169

St. Louis Park, MN



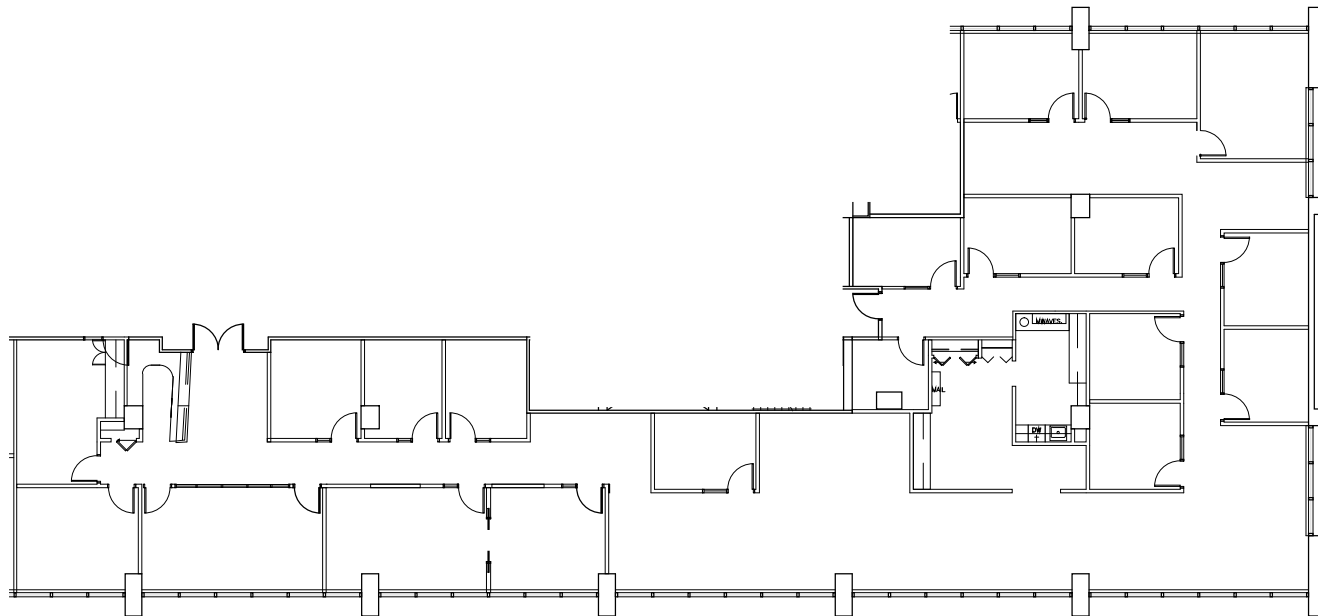
mp **Metropoint**
The Center for Business

Suite 1575

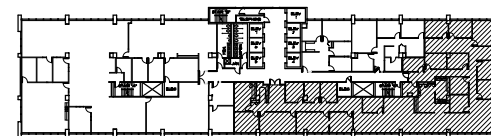
7,237 RSF

600 S. Hwy 169

St. Louis Park, MN



OWNED BY AN AFFILIATE OF
EQUUS
CAPITAL PARTNERS, LTD.

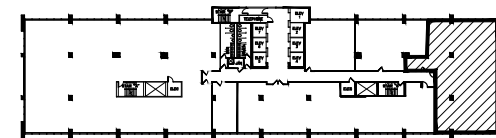
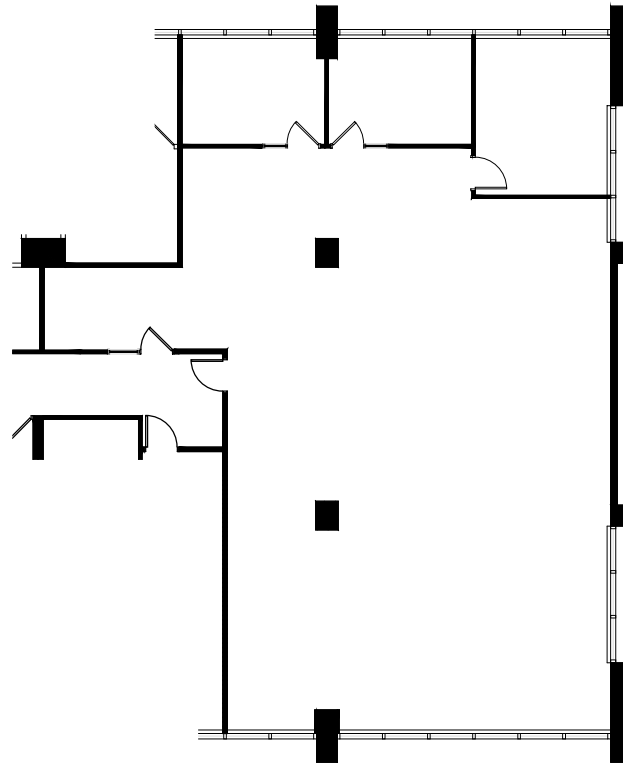


mp **Metropoint**
The Center for Business

Suite 1585

3,339 RSF

600 S. Hwy 169
St. Louis Park, MN



OWNED BY AN AFFILIATE OF
EQUUS
CAPITAL PARTNERS, LTD.

Colliers
INTERNATIONAL

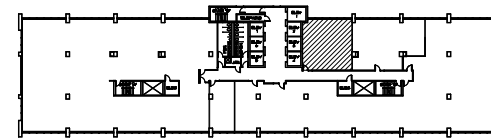
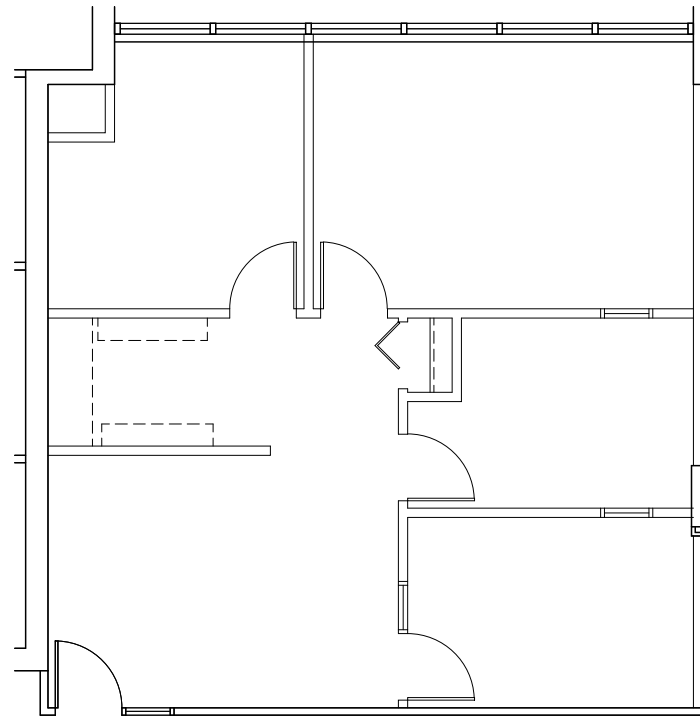
mp **Metropoint**
The Center for Business

Suite 1597

1,052 RSF

600 S. Hwy 169

St. Louis Park, MN



OWNED BY AN AFFILIATE OF
EQUUS **CUSHMAN & WAKEFIELD**
CAPITAL PARTNERS, LTD.

mp **Metropoint**
The Center for Business

Suite 1800

18,485 RSF

600 S. Hwy 169

St. Louis Park, MN

